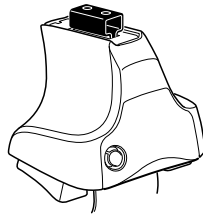


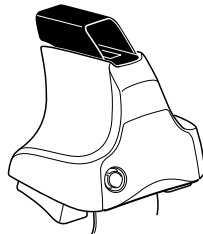
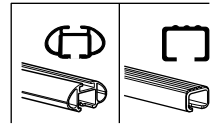
Kit 1511

TOYOTA Tacoma, 4-dr Extended Cab, *05–
TOYOTA Tacoma, 4-dr Quad Cab, *05–

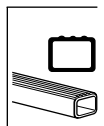
*North America



754 Rapid System
480R Rapid Traverse (North America)



480 Traverse (North America)

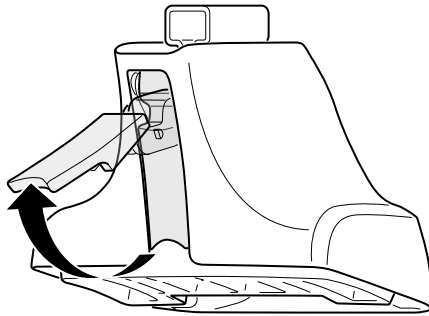


754 Rapid System
 480R Rapid Traverse (North America)

480 Traverse (North America)

(North America)

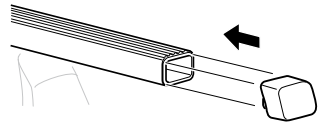
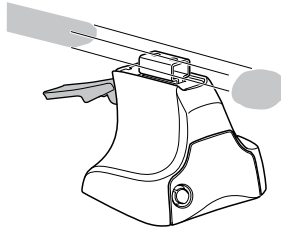
1



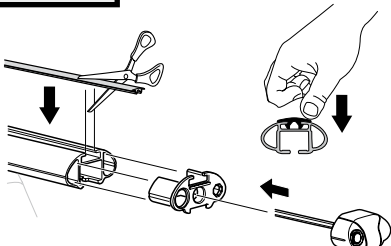
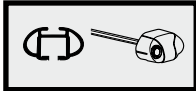
2



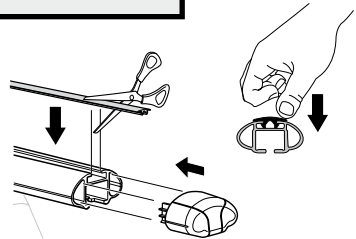
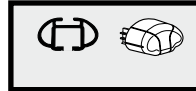
754 Rapid System
 480R Rapid Traverse
 (North America)



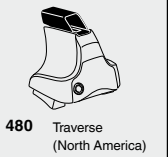
x4



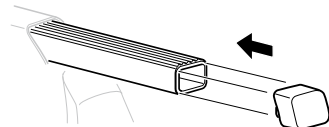
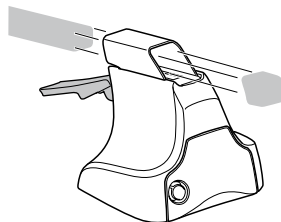
x4



x4

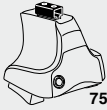


480 Traverse
 (North America)

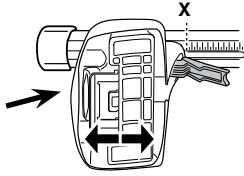


x4

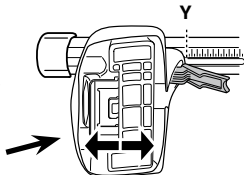
3



754 Rapid System



	X
TOYOTA Tacoma, 4-dr Extended Cab, *05-	44
TOYOTA Tacoma, 4-dr Quad Cab, *05-	44



	Y
TOYOTA Tacoma, 4-dr Extended Cab, *05-	44
TOYOTA Tacoma, 4-dr Quad Cab, *05-	44

3

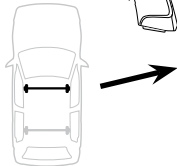


480R Rapid Traverse

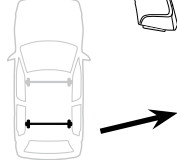


480 Traverse

(North America)

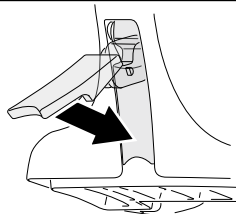


	X inch	X mm
TOYOTA Tacoma, 4-dr Extended Cab, *05-	43 "	1091 mm
TOYOTA Tacoma, 4-dr Quad Cab, *05-	43 "	1091 mm



	Y inch	Y mm
TOYOTA Tacoma, 4-dr Extended Cab, *05-	43 "	1091 mm
TOYOTA Tacoma, 4-dr Quad Cab, *05-	43 "	1091 mm

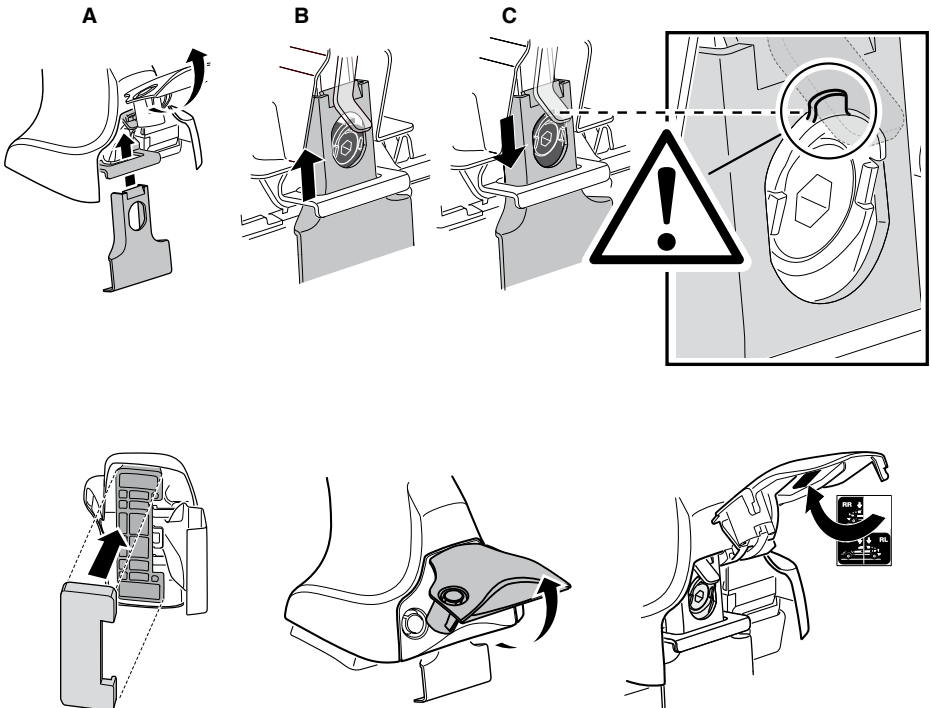
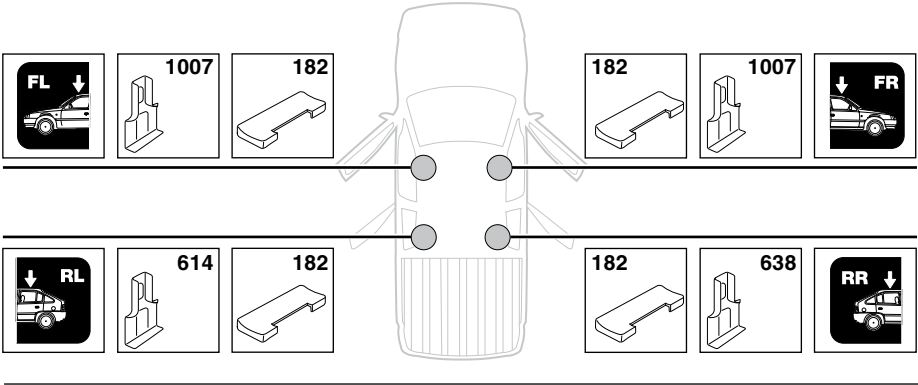
4



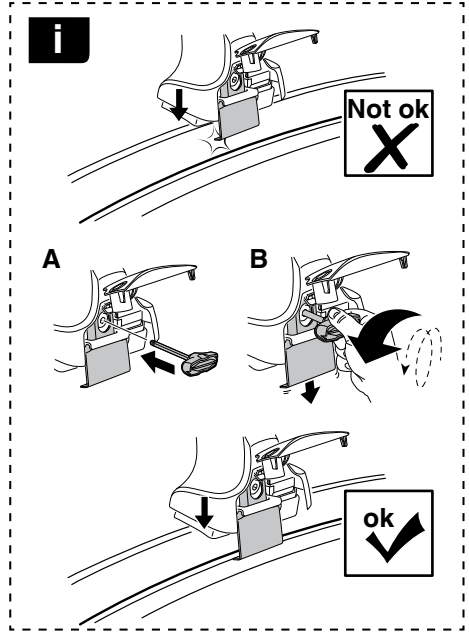
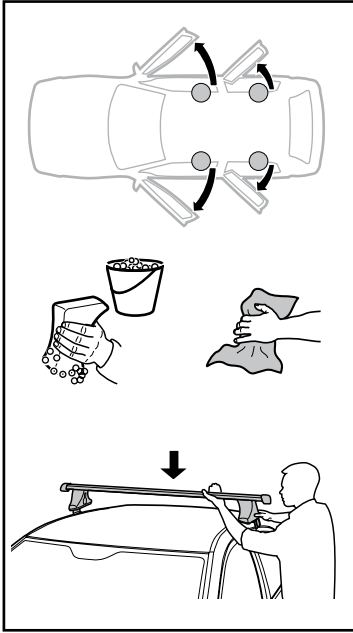
5

TOYOTA Tacoma, 4-dr Extended Cab, *05-

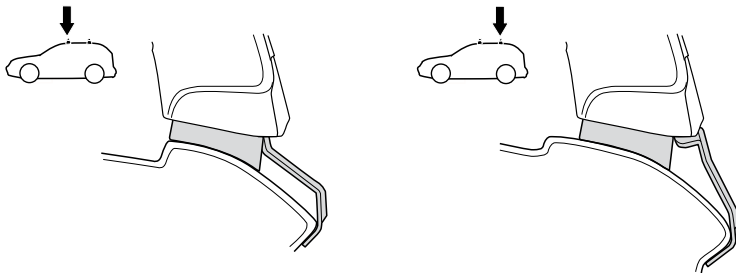
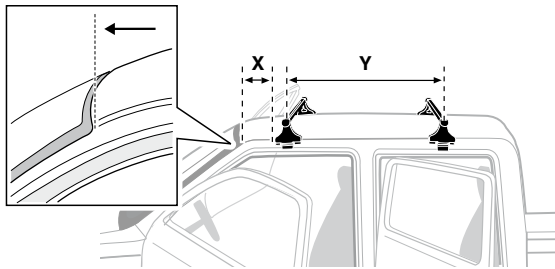
TOYOTA Tacoma, 4-dr Quad Cab, *05-



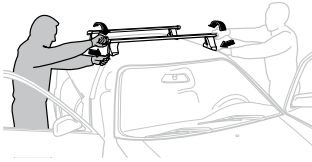
6



	X mm	Y mm	X inch	Y inch
TOYOTA Tacoma, 4-dr Extended Cab, *05-	330 mm	660 mm	13 "	26 "
TOYOTA Tacoma, 4-dr Quad Cab, *05-	330 mm	660 mm	13 "	26 "



7



GB/US Tighten alternately
D Die Schrauben abwechselnd anziehen
F Serrer alternativement chaque côté
NL Afwisselend aan de linker- en de rechterkant aandraaien
I Alternare il serraggio delle viti
E Apertar alternativamente
PT Aperte alternadamente
S Dra åt växelvis
FIN Kierrä vuorotellen
EST Pinguldage vaheldumisi
LAT Pievelciēt pamišus
LIT Užsukinėkite pakaitomis
PL Śruby dokręcaj naprzemiennie
RU Затягивайте попеременно

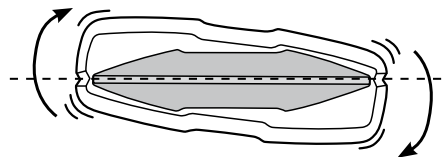
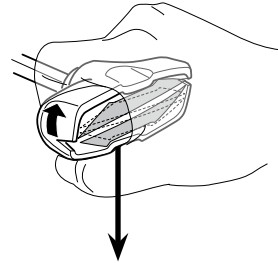
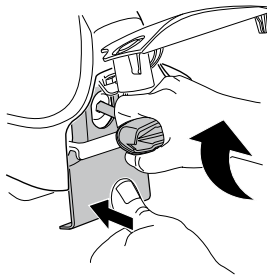
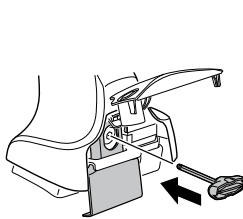
CZ Pokrétla bagazníka dokręcaj dokręcaj naprzemiennie.
SK Doťahujte striedavo
SLO Privijajte izmenično.
HR Naizmjenično zategnite
HU Egymástól függetlenül szorítandó
GR Σφιγγετε εναλλάξ
TR Dönüşümlü sıkın

中文 交替拧紧

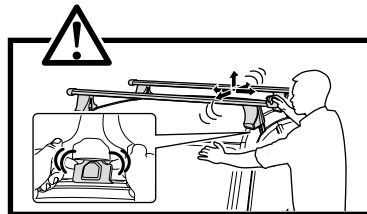
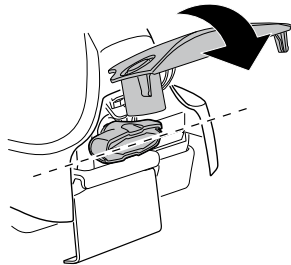
한국어 번갈아 가며 조이십시오.

日本語 交互に締め付けてください。

ไทย ชั้้นในแบบสลับ



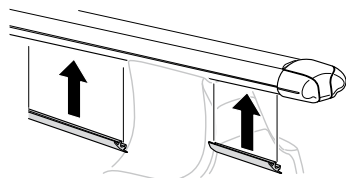
≈ 3 Nm

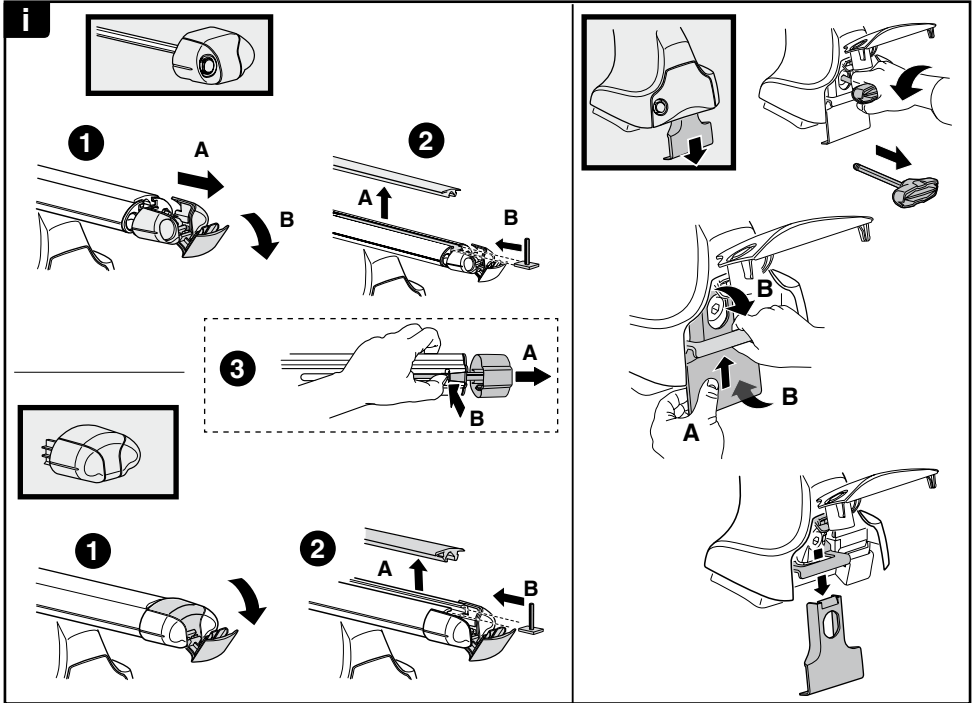
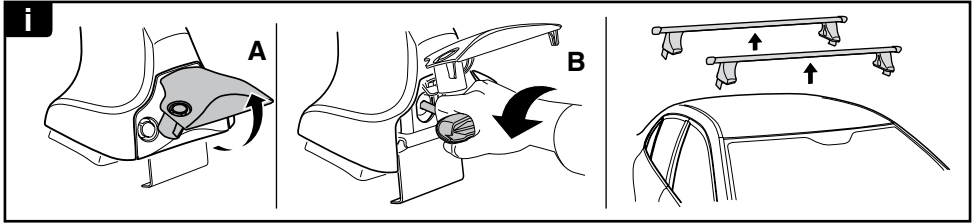


8

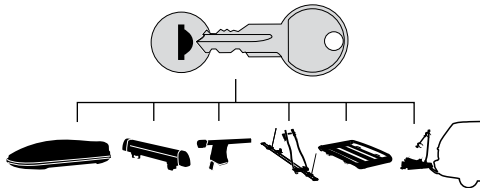


x1
17 mm





THULE
SWEDEN
**ONE
KEY
SYSTEM**



- 544** (x4)
- 596** (x6)
- 588** (x8)
- NA **510** (x10)
- EUR **452** (x12)
- ASIA

