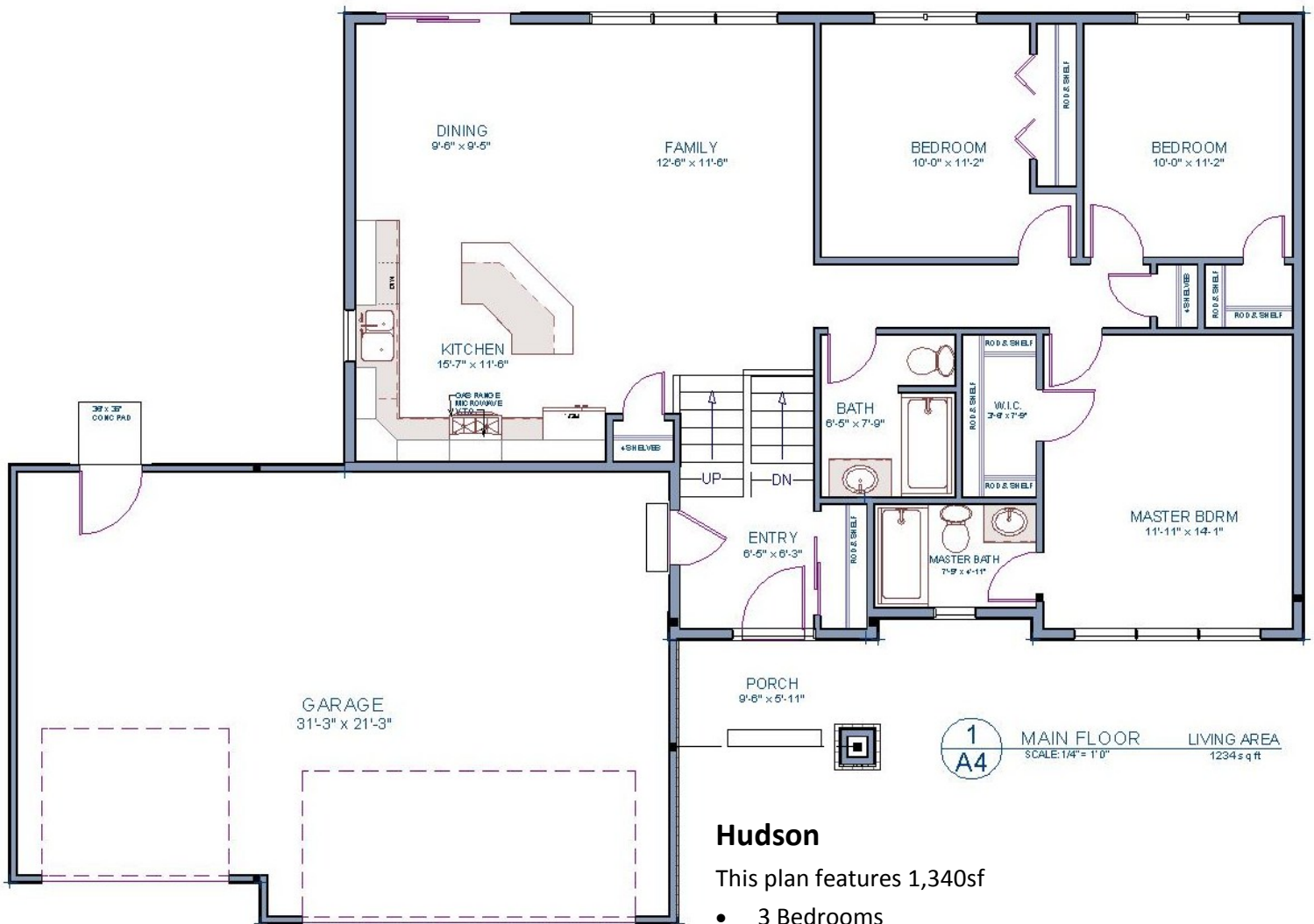


Hudson

10045 Dogwood St NW
Coon Rapids, MN 55448



Elevation shown may not represent continuity of options, finishes or materials applied to other elevations of home



Hudson

This plan features 1,340sf

- 3 Bedrooms
- 2 Bathrooms
- Hardwood Floors with 20 year warranty
- Ceramic Tile Bathroom Floors
- Delta Faucets
- Frigidaire Stainless Steel Appliances
- Granite Countertops
- Washer & Dryer
- Professionally Designed Landscaping
- Milgard Windows
- Full Unfinished Basement, 1,100sf available to finish
- Energy Efficient GreenPath Designed Home
- Minnesota Park Neighborhood in Coon Rapids

\$259,900

Turn over for more...



Information deemed reliable but not guaranteed

© Endres Custom Homes • Builder BC494675 • www.endrescustomhomes.com • Designs © by designer

Endres Custom Homes

Quality Included Features

In addition to these Included Features, Endres Custom Homes offers unlimited customization ability. *Creativity has no Boundaries*

Kitchen Features

- Stained Hardwood Cabinetry Package
- Granite Countertops
- Undermount Stainless Steel Sink
- Hardwood Floors with 20 year finish warranty
- Delta® Faucet with Sprayer
- 4 piece Frigidaire® Stainless Steel Appliance Package
 - 36" Side x Side Refrigerator with Ice/Water
 - 30" Slide-In gas Range
 - OTR Microwave
 - Built in Dishwasher
- Garbage Disposal
- Recessed Lighting

Energy Features

- R-10 Continuous Foundation Insulation
- R-21 Wall Insulation
- R-50 Cellulose Insulated Ceilings
- R-38 Cellulose Insulated Bonus Room Floors
- Energy Heel Trusses
- Tyvek® Building Envelope Weatherization System
- Milgard® Low-E Windows
- 95.5% Efficient Gas Furnace
- 13 Seer Air Conditioner

Exterior Features

- LP Smartside® siding on front façade
 - 25yr paint warranty
 - 50yr product warranty
- Superior Ice and Water Shield System
- Owens Corning® Architectural Shingles
- Watchdog® Basement Waterproofing
- Concrete Sidewalks
- 2 Weatherproof Electrical Outlets
- 2 Outside Frost Resistant Water Spigots
- Western Red Cedar Mulch Landscaping Beds
- Professionally Designed Landscaping

Interior Features

- Enameled 6 Panel Doors
- Enameled 4" Casing with Lintel, Apron & Stool
- Enameled 5" high Colonial Base
- Door Chime
- Wire Shelving in All Closets
- Ceiling Lights in all Rooms
- Top Load Washer & Dryer
- Laundry Deep Sink

Safety and Convenience Features

- Schlage® Deadbolts and Handleset
- Smoke and CO2 Detectors
- Cat5 (Internet/Network) Jacks in each room
- RG6 Cable Jacks in each room
- 40gal Gas Water Heater
- 'Oatey® Box' Washer Connection
- 4" Media Air Cleaner
- Heat Recovery Ventilator
- 1-2-10 Warranty

Bath Features

- Acrylic Fiberglass Bay in Master Bath
- Stained Hardwood Vanities
- Cultured Marble Vanity Tops
- Framed Mirrors
- Delta® Faucets
- Ceramic Tile Flooring
- Broan® Bath Exhaust Fans
- Gerber® Viper Toilets
- Acrylic Fiberglass Bath Bay in Main Bath

Construction Features

- Full Unfinished Basement
- Environmentally Friendly CMU Block Foundation
- ¾" T&G Flooring
- TetraGrip® subfloor fastening
- Wirsbo® Potable Plumbing System
- ½ " OSB Roof Deck with Clips
- 7/16" OSB Wall Sheathing
- Drain Tile System with Sump Pump
- Passive Radon Extraction System
- Shut-Off Valves on All Faucets
- Overhead Garage Doors with Belt Drive Openers



612-221-2215

Information deemed reliable but not guaranteed
© Endres Custom Homes • Builder BC494675 • www.endrescustomhomes.com

Danny Super
612-655-1661

